

# The beginning of the end for Hoi Ha Wan Marine Park?

## Mr. Stanley Ng Wing-fai

Chair of Professional Commons,  
Town Planner

## Dr Robin S Bradbeer

Secretary of Professional Commons,  
Convener Working Group on Country  
Park Enclaves

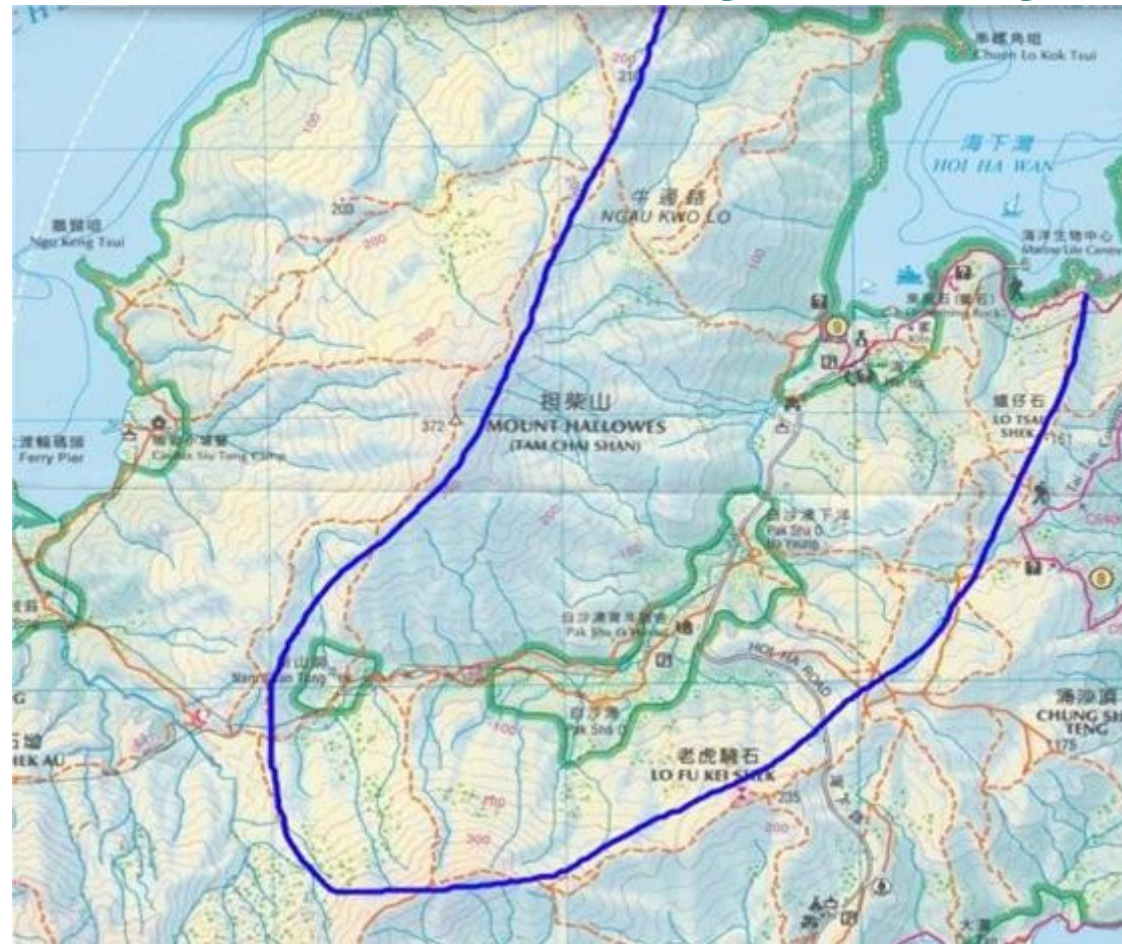
## Mr Paul Hodgson

Member of Professional Commons,  
Director Oceanway Corp.

# Outline

- Recent survey results
- Causes of coral and related ecological destruction
- The guilty parties
- The Professional Commons' response
- Possible mitigation measures
- Questions

# The Pak Sha O Valley ecosystem



# The Hoi Ha Wan Marine Park



- One of the most coral diverse areas in South China Sea
- Designated Marine Park in 1996
- One of the most visited ecological sites in Hong Kong

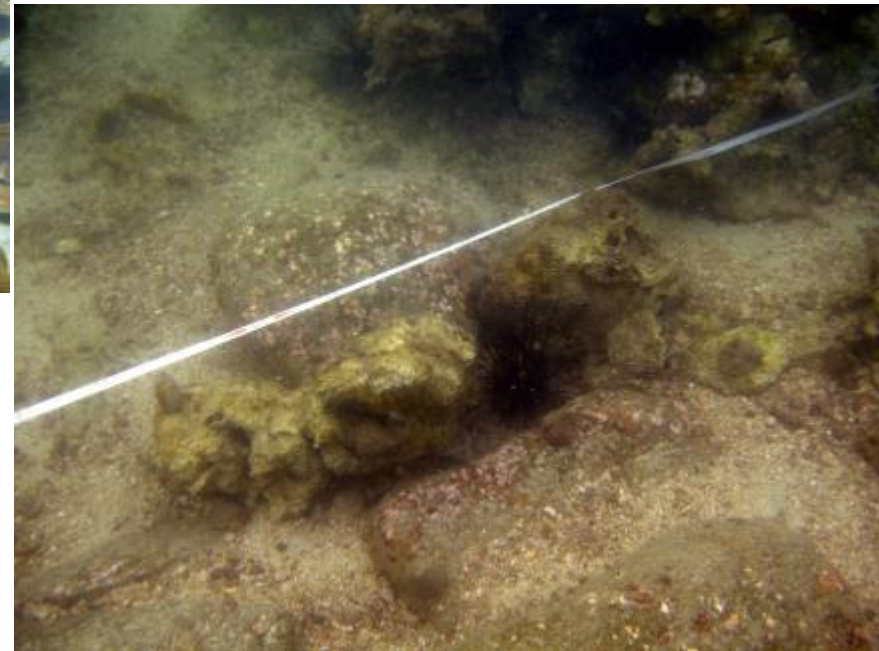


# Recent survey results



November 2015

January 2016



# Recent survey results



November 2015

January 2016



# Recent survey results



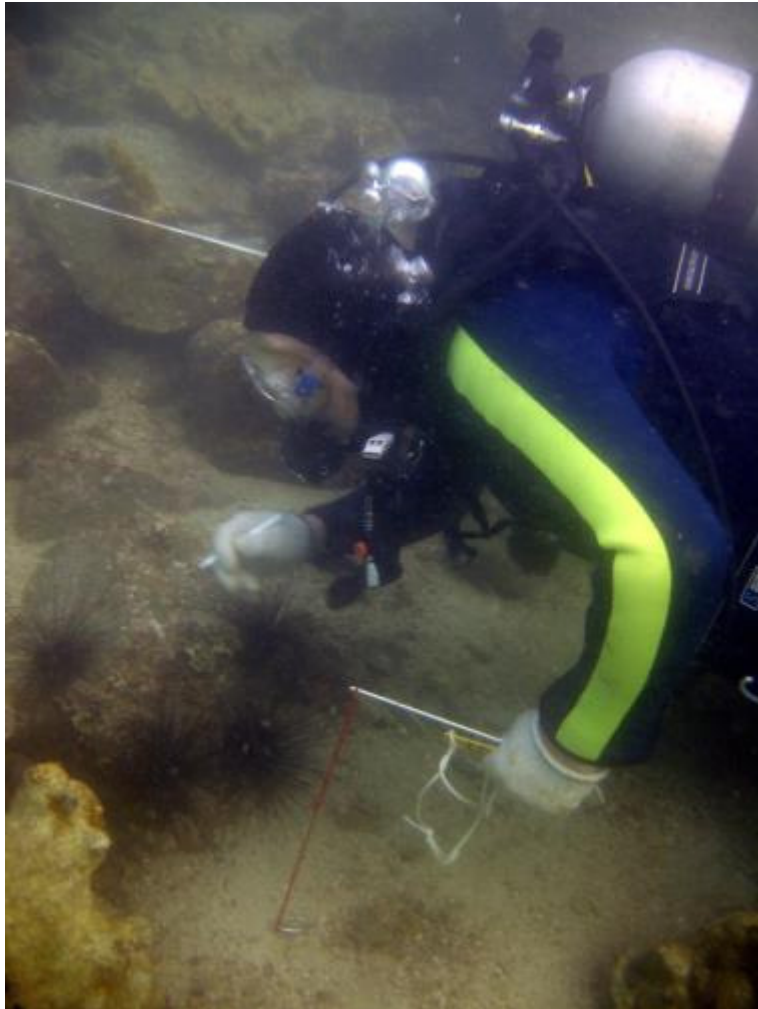
November 2015

January 2016





# Recent survey results



Hoi Ha Wan corals

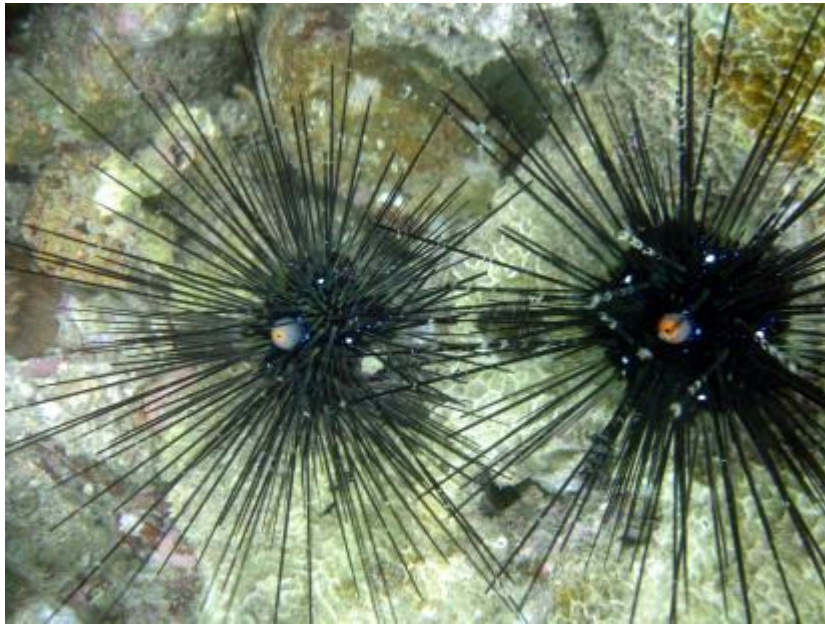
One Grade A coral area and a nearby site has been totally destroyed to bed rock and boulders. This comprises more than 0.5km<sup>2</sup> of the coral area. This problem is continuing and more coral will be bio-eroded to nothing.

Maybe one quarter of the corals in Hoi Ha Wan have gone.

27 January 2016



# The guilty parties (i)



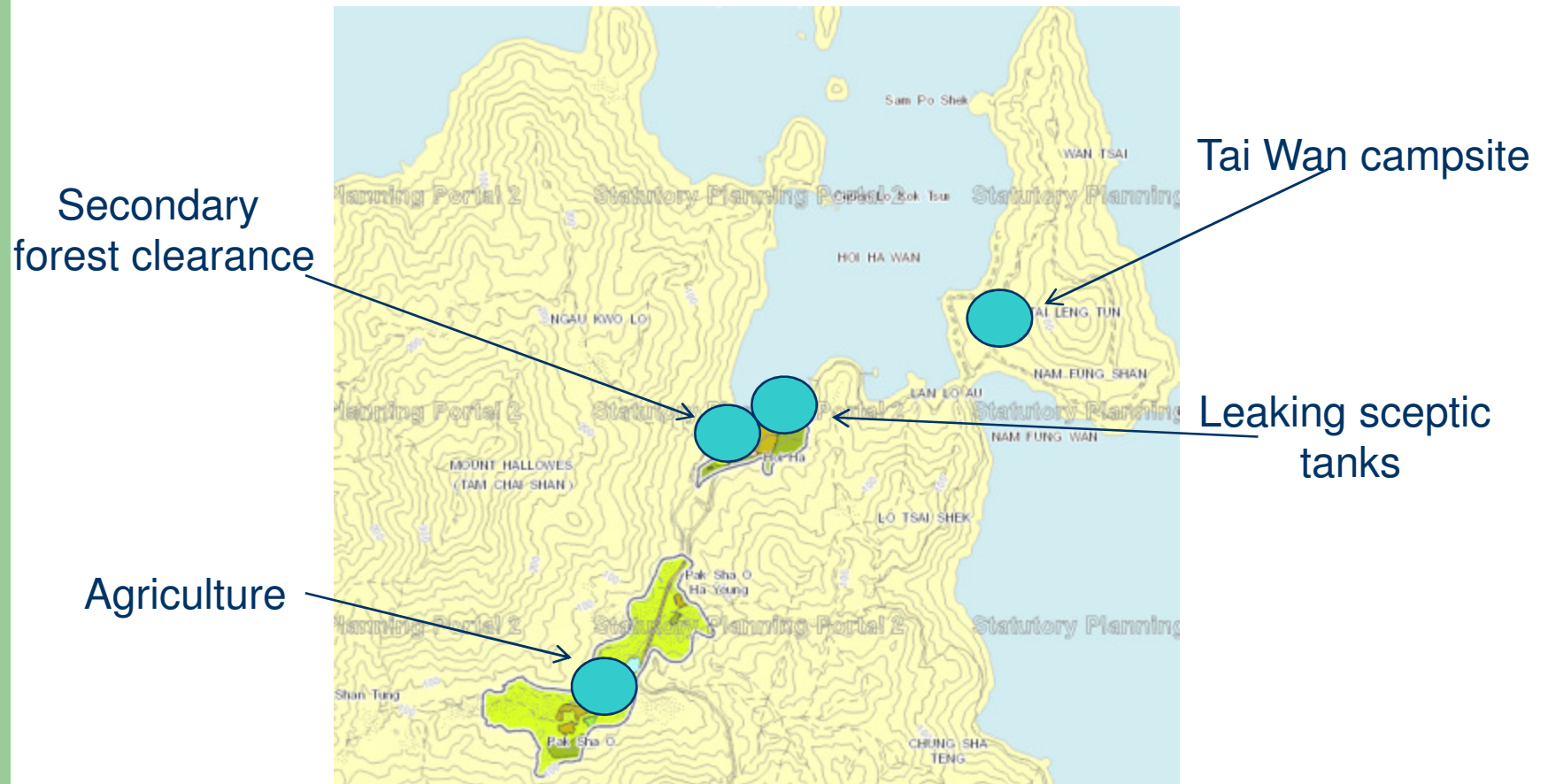
## Urchins

**Why?**  
Algae  
No crabs



# The guilty parties (ii)

## Pollution



## a) Tai Wan campsite

- Although most sewage is processed before discharge many pollutants still find their way into the Marine Park
- Relatively high levels of e-coli found by HKU in 2015



## **b) Leaking septic tanks**

- Many of the houses along the beach front in Hoi Ha village have leaking septic tanks
- High levels of e-coli found in the beach and estuary areas
- Coastal Protection Area zoning does not require leaking septic tanks to be repaired or alternative sewage disposal solutions

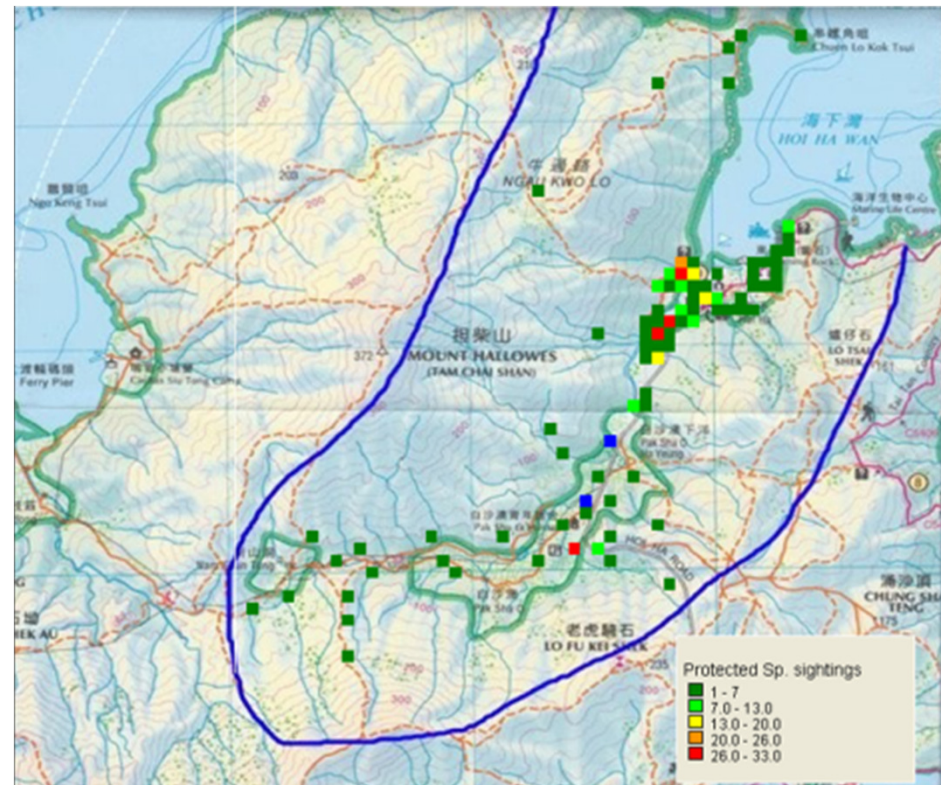
## c) Clearance of secondary forest

- The clearance of secondary forest on the flood plain of the river estuary has increased the number of pollutants into the Marine Park
- Permitted under the Outline Zoning Plan of Town Planning Board 2015



## c) Clearance of secondary forest

- Up to 25 houses planned for the area under the OZP
- Pak Sha O river estuary a major wildlife corridor
- Many endangered species already affected





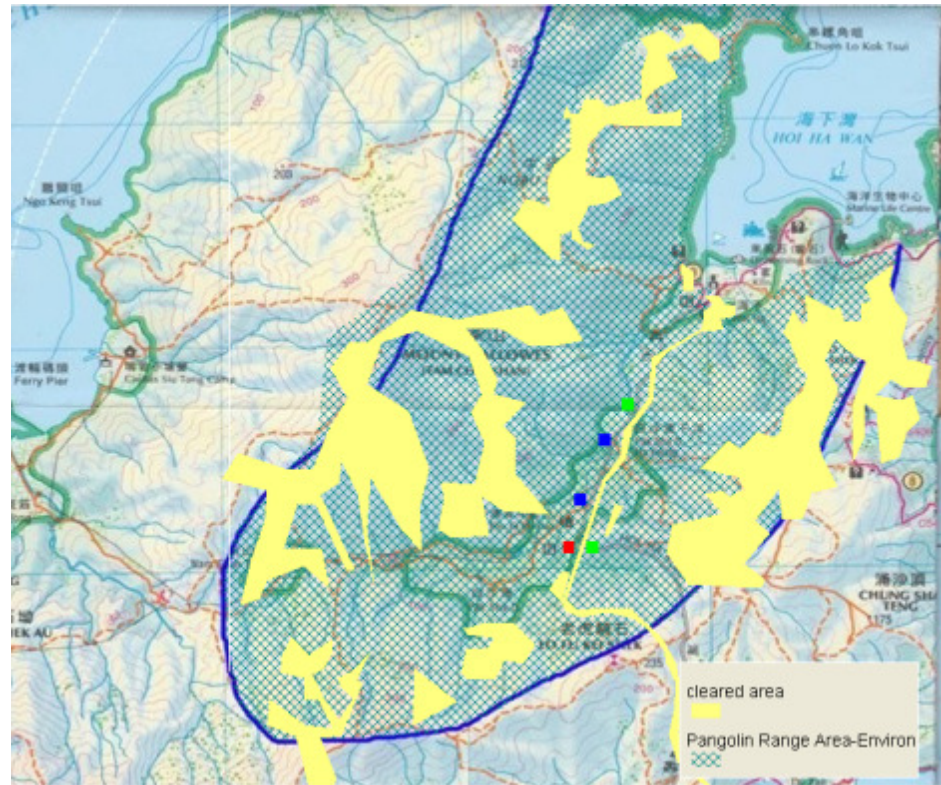
## d) Agricultural development

- Pak Sha O wetlands provide constant collection and delivery of fresh water to the Marine Park
- Recent agricultural development on these wetlands has increased the amount of nutrient pollution flowing down the stream



## d) Agricultural development

- The Agricultural zone is being increased under the draft OZP for Pak Sha O
- 49 houses also zoned
- Pak Sha O river valley
- Critically endangered species, such as Chinese pangolin already affected



Pangolin range in PSORV

# Our response

- All Country Park enclaves MUST be integrated into the Country Parks
- A full Environmental Impact Assessment by independent agencies must be carried out before any zoning proposals are gazetted
- Village zones must be on low ecologically impacted areas
- NT Small House applications must be accompanied by an EIA in the Country Parks
- Extended Village zones should be zoned similar to urban Comprehensive Development Areas



# Possible mitigation measures

- Pressure Town Planning Board:
  - to amend OZP for Hoi Ha to change Green Belt and Coastal Protection Area to Conservation Area
  - to move extension of current V zone to a less environmentally sensitive area
  - to amend draft OZP for Pak Sha O to protect the whole of the enclave and designate it Conservation Area leading to full integration into Country Park
- Make the PSORV an SSSI
- Mobilise AFCD for immediate action to start work on a retrieval programme within the Marine Park – coral transplants, control of urchin populations etc

# Update legislation

- Endangered Species - CAP 170
  - Excludes Invertebrates
    - Corals
  - Excludes habitat
    - You can destroy that and it is not illegal
  - Excludes categories of protection
    - Critically & moderately endangered animals are the same

# Questions